

Courses & Distances  
Down Cove Creek  
from the post  
Joining J. Pendergrast

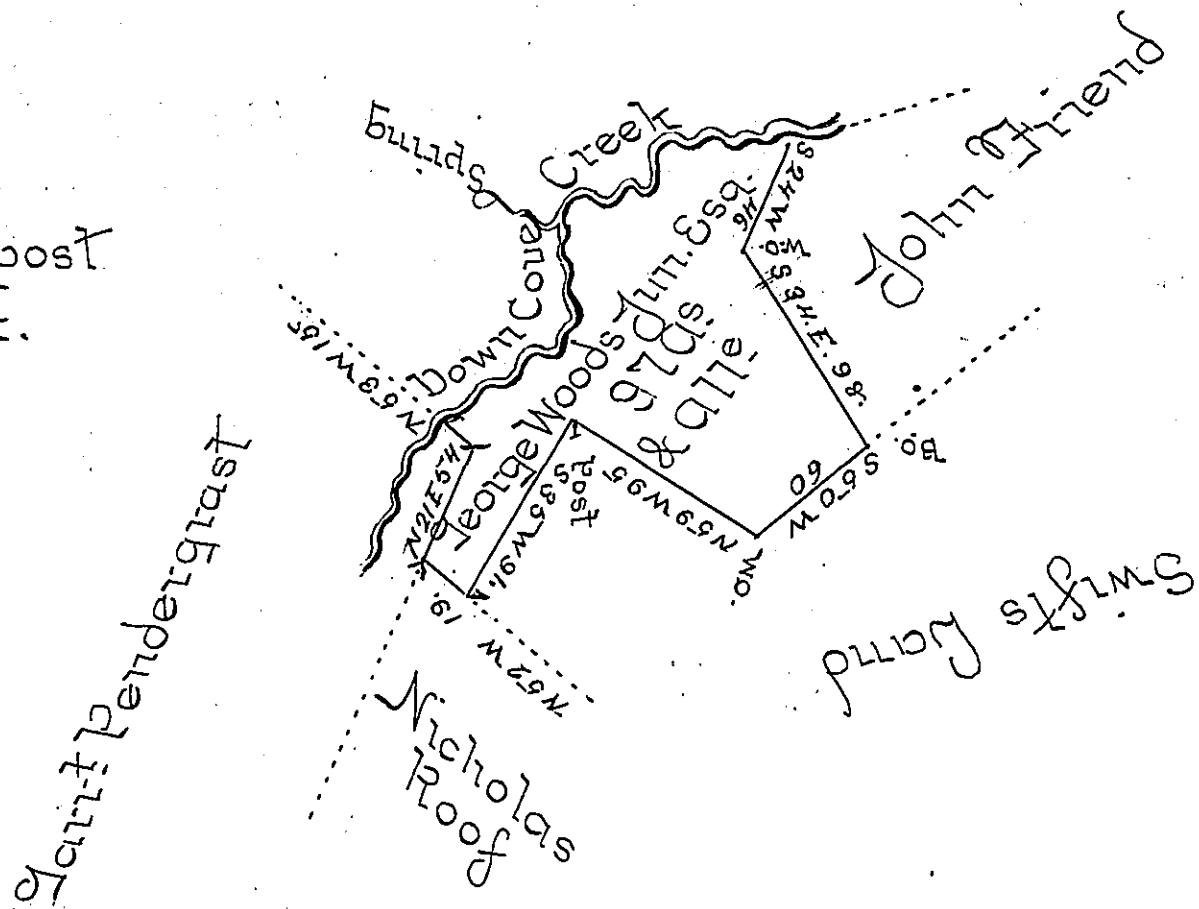
N 60 E. 76 ps.

N 10 W 54.

N 55 E. 30.

N 14 E. 26.

N 57 1/2 E. 59. to post  
on the Creek.



Situated on Cove Creek in Colerain Township Bedford  
County Containing Ninety Seven Acres With the usual  
Allowance of Six P<sup>t</sup> Cent for Roads &c. Surveyed for  
George Woods Junr Esq<sup>r</sup> the 1<sup>st</sup> Day of March 1794.  
on Warrant Dated December 13<sup>th</sup> 1793.

George Woods Junr Esq<sup>r</sup> D.S.

To Daniel Brodhead Esq<sup>r</sup> S.Y.

*IN TESTIMONY* that the above is a copy of the original remaining on file in  
the Department of Internal Affairs of Pennsylvania, made  
conformably to an Act of Assembly approved the 16th day of  
February, 1833, I have hereunto set my Hand and caused  
the Seal of said Department to be affixed at Harrisburg,

this fourth day of July 1899.

*James W. Patton*  
Secretary of Internal Affairs.